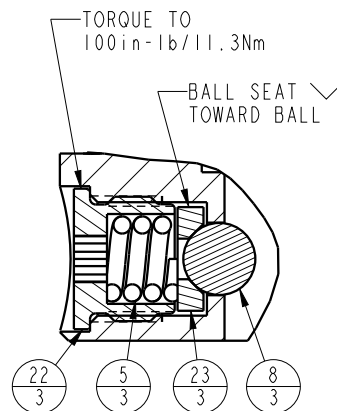
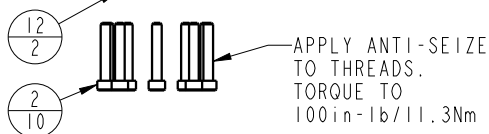
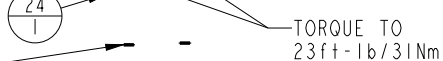
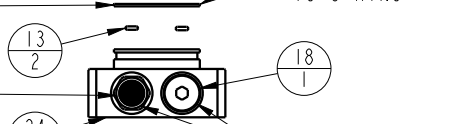
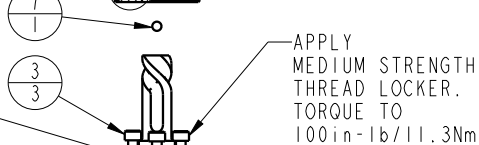
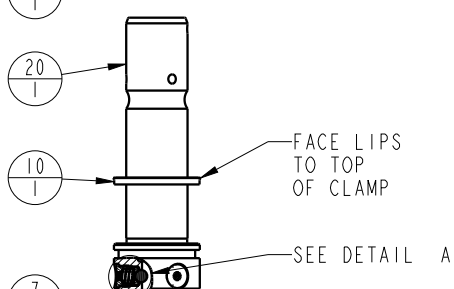
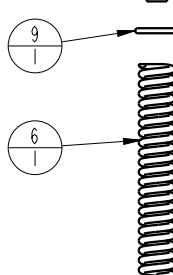
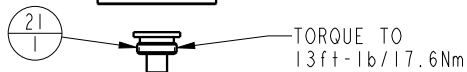
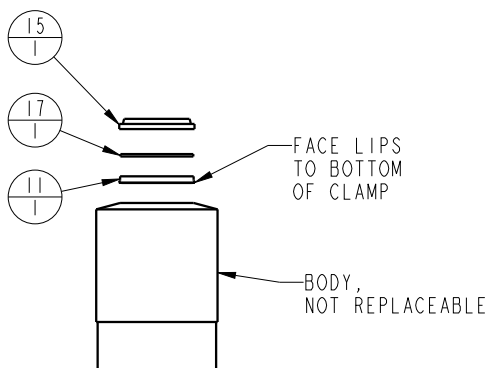


APPLY LUBRICANT TO ALL SEALS
PRIOR TO INSTALLATION.
DO NOT USE SILICONE TYPE LUBRICANTS.
FOR PROPER ARM MOUNTING SEE ISI505.



DETAIL A
SCALE 1.500

No.	QTY	PART No.	DESCRIPTION	Std. Seal Kit	FKM Seal Kit	Spring Kit
N/A	N/A	ISI505	INSTRUCTION SHEET, ARM INSTALLATION			
N/A	N/A	61704022	SPRING KIT			
N/A	N/A	6V711041	SEAL KIT, FKM			
N/A	N/A	60711041	SEAL KIT, STANDARD			
26	1	81591823	CAM, SC, LP, 5000/22KN, LH, TC			
25	1	81591302	DISK, Ø.75 X .12			X
24	1	81541807	BASE, SC, BF, LP, 22kN			
23	3	81532108	SEAT, BALL, SC, LP, TC			
22	3	81532107	RETAINER, SC, LP, TC			
21	1	81531811	PLUG, SC, LP, 5000&22KN, SA, TC			
20	1	81511810	PLUNGER, SC, LP, 5000&22KN, SA, TC			
19	1	49001905	BREATHER, 1/4 BSPP			
18	1	43068006	PLUG, 1/4 BSPP MALE			
17	1	39054008	BU RING, (-218)	X	X	
16	1	39054007	BU RING, (-030)	X	39054021	
15	1	39053005	WIPER, SNAP-IN, (1-1/4)	X	X	
14	1	39051042	O-RING, (-030)	X	39V01021	
13	2	39051041	O-RING, (-006)	X	39V51041	
12	2	39050042	O-RING, (-011)	X	39051025	
11	1	39011060	SEAL, BEVEL W/WHEEL INSERT, 1-1/4 x 1/8 x 1-1/2	X	39052015	
10	1	39011055	SEAL, BEVEL, 1-9/16 x 3/32 x 1-3/4	X	39052013	
9	1	39000029	O-RING, (-115)	X	39V00029	X
8	3	23650004	BALL, TUNGSTEN-CARBIDE .250			
7	1	23600011	BALL, STEEL, ALLOY, .187			X
6	1	23350067	SPRING, COMPRESSION			X
5	3	23350066	SPRING, COMPRESSION			
4	2	21500200	WASHER			
3	3	21500031	SHCS, M5 x 0.8 x 14, ALY			
2	10	21500023	SHCS, M5 x .8-66 x 30MM			
1	2	21500019	SCREW, CAP, BTNH, M3 x 6, ALY			

PARTS LIST



VEKTEK, INC.
1334 E. SIXTH AVE. P.O. BOX 625
EMPORIA, KS. 66801 U.S.A.

ASSEMBLIES AFFECTED

41422212
41422212F

PARTS LIST, ASSY, SC, LP, TC, BF, 22KN, SA, LH

SIZE
A

MPL7162

REV
C

SHEET 1 OF 1

FORM FEG035_PL_ASIZE, REV. B

C	5922	RELEASE	JDW	03/23/26
REV	IN ACCORDANCE WITH ECN	EFFECTIVE DATE	REVISED BY	DATE
DRW BY:	JDW	DRAWING STATUS: Released		
DATE:	6-17-11	PRODUCTION APPROVED FOR RELEASED STATUS ONLY		

